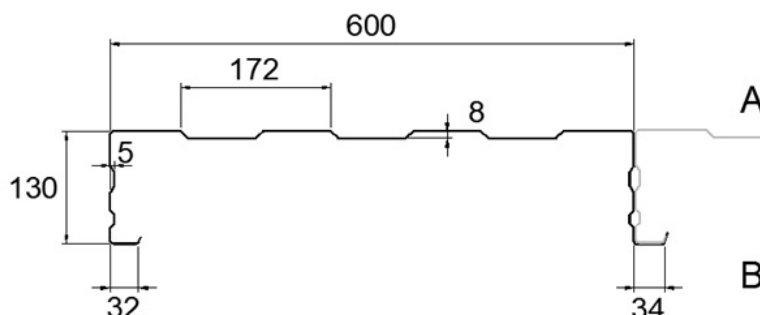


## TECHNICAL DATA SHEET

### SAB B130/600



Gauge	Weight
0,75 mm	9,42 kg/m <sup>2</sup>
0,88 mm	11,05 kg/m <sup>2</sup>
1,00 mm	12,56 kg/m <sup>2</sup>
1,13 mm	14,19 kg/m <sup>2</sup>
1,25 mm	15,70 kg/m <sup>2</sup>
1,50 mm	18,84 kg/m <sup>2</sup>

#### STEEL GRADE

Yield strength minimum 320 N/mm<sup>2</sup>, zinc layer can be Z, AZ, ZA or ZM.

#### SUSTAINABILITY

Environmentally relevant product information (EPD) are published on [www.sabprofil.com](http://www.sabprofil.com).

#### QUALITY CONTROLE

We guarantee that the product has been produced according the valid standards and directives

#### REACTION TO FIRE

Incombustible, class A1 according to EN 13501-1 for coating systems unto 65 µm

#### SPANS

Depend on wind loads, deflection limitations and safety factors.

See our SAB-brochure for more information

#### STANDARDS

Production according ISO 9001, ISO 14001, ISO 45001 and BES 6001

CE-marking and Declaration of Performance according EN 1090

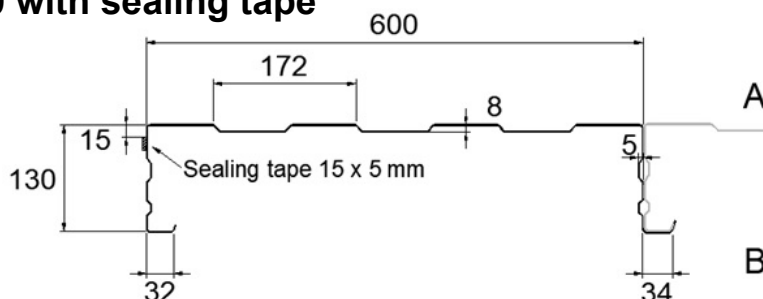
Tolerances according PPA-Europe Quality Regulations

Steel thickness: EN 10143 is used as a basis for the gauge tolerances, applied to the steel core only and excluding zinc layer and organic coating.

IJsselstein, June 2025

## TECHNICAL DATA SHEET

### SAB B130/600 with sealing tape



Gauge	Weight
0,75 mm	9,42 kg/m <sup>2</sup>
0,88 mm	11,05 kg/m <sup>2</sup>
1,00 mm	12,56 kg/m <sup>2</sup>
1,13 mm	14,19 kg/m <sup>2</sup>
1,25 mm	15,70 kg/m <sup>2</sup>
1,50 mm	18,84 kg/m <sup>2</sup>

#### STEEL GRADE

Yield strength minimum 320 N/mm<sup>2</sup>, zinc layer can be Z, AZ, ZA or ZM.

#### SUSTAINABILITY

Environmentally relevant product information (EPD) are published on [www.sabprofil.nl](http://www.sabprofil.nl).

#### SEALING TAPE

Impregnated grey polyurethane foam (with flame retardants)

Fire classification B2 according to DIN 4102

Air permeability  $\alpha < 0,1 \text{ m}^3/(\text{hm}(\text{daPa}))$  at 66% compression

#### QUALITY CONTROLE

We guarantee that the product has been produced according the valid standards and directives

#### REACTION TO FIRE

Incombustible, class A1 according to EN 13501-1 for coating systems unto 65  $\mu\text{m}$

#### SPANS

Depend on wind loads, deflection limitations and safety factors.

See our SAB-brochure for more information

#### STANDARDS

Production according ISO 9001, ISO 14001, ISO 45001 and BES 6001

CE-marking and Declaration of Performance according EN 1090

Tolerances according PPA-Europe Quality Regulations

Steel thickness: EN 10143 is used as a basis for the gauge tolerances, applied to the steel core only and excluding zinc layer and organic coating.

IJsselstein, June 2025